

TABLE 3-2
Clearances, in Inches, with Specified Forms of Protection^{1,2}

in x 25.4 = mm

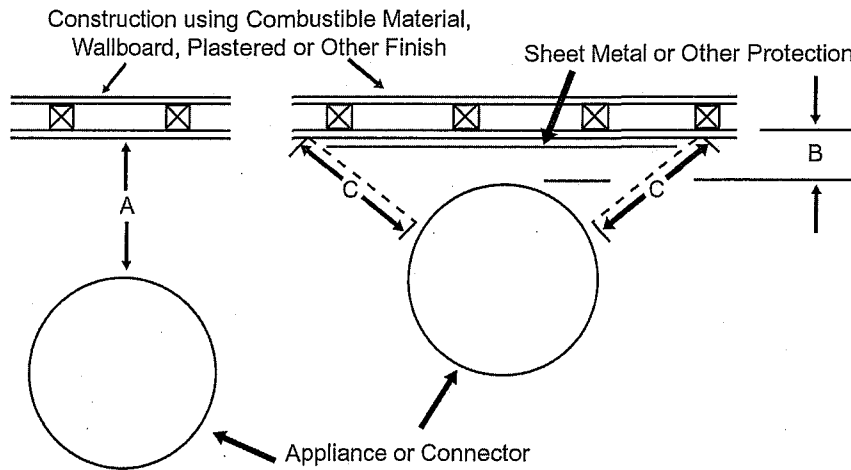
TYPE OF PROTECTION Applied to the Combustible Material Unless Otherwise Specified and Covering All Surfaces within the Distance Specified as the Required Clearance with No Protection (Thicknesses Are Minimum)	Where the Standard Clearance in Table 3-1 with No Protection is:											
	36 inches			18 inches			12 inches		9 inches		6 inches	
	Above	Sides and Rear	Chimney or Vent Connector	Above	Sides and Rear	Chimney or Vent Connector	Above	Sides and Rear	Chimney or Vent Connector	Above	Sides and Rear	Chimney or Vent Connector
(a) 1/4" insulating millboard spaced out 1" ³	30	18	30	15	9	12	9	6	6	3	2	3
(b) 0.013" (No. 28 manufacturer's standard gauge) steel sheet on 1/4" insulating millboard	24	18	24	12	9	12	9	6	4	3	2	2
(c) 0.013" (No. 28 manufacturer's standard gauge) steel sheet spaced out 1" ³	18	12	18	9	6	9	6	4	4	2	2	2
(d) 0.013" (No. 28 manufacturer's standard gauge) steel sheet on 1/8" insulating millboard spaced out 1" ³	18	12	18	9	6	9	6	4	4	2	2	2
(e) 1-1/2" insulating cement covering on heating appliance	18	12	36	9	6	18	6	4	9	2	1	6
(f) 1/4" insulating millboard on 1" mineral fiber batts reinforced with wire mesh or equivalent	18	12	18	6	6	6	4	4	4	2	2	2
(g) 0.027" (No. 22 manufacturer's standard gauge) steel sheet on 1" mineral fiber batts reinforced with wire or equivalent	18	12	12	4	3	3	2	2	2	2	2	2
(h) 1/4" insulating millboard	36	36	36	18	18	18	12	12	9	4	4	4

¹For appliances complying with Sections 304.2 and 304.3

²Except for the protection described in (e), all clearances shall be measured from the outer surface of the appliance to the combustible material, disregarding any intervening protection applied to the combustible material.

³Spacers shall be of noncombustible material.

Note: Insulating millboard is a factory-made product formed of noncombustible materials, normally fibers, and having a thermal conductivity of 1 Btu-inch per square foot per degree F [1.73 W/(m·K)] or less.



- A. Dimension shall not be less than the required clearance with no protection set forth in Tables 3-1 and 3-3 and in the sections applying to various types of appliances.
- B. Dimension shall be not less than the reduced clearance set forth in Table 3-2.
- C. Dimension shall be not less than the clearance required for dimension A.

FIGURE 3-1 Extent of Protection Required to Reduce Clearances from Appliance, Chimney, or Vent Connectors.